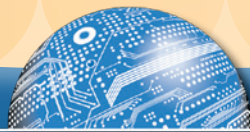


Promethean-Certified
Professional Services

ActivClassroom Installation and Project Management



LOGICAL CHOICE
TECHNOLOGIES

Transforming classrooms into engaging
21st Century learning environments.



Choose **the right partner** to ensure success for your ActivClassroom implementation

Well-trained

Fully-equipped

Unsurpassed experience

Time-tested processes

WHY LOGICAL CHOICE?

Logical Choice is a strong Promethean installation partner at the top of its industry. In fact, our Professional Services Team has installed more ActivClassrooms than any other company in the United States. With a vast amount of knowledge and a track record second to none, we can help you plan, execute and manage your ActivClassroom implementation. That is our core business. Installation after installation... we deliver successful outcomes with as little disruption to teaching and learning in your school as possible, whether you are transforming a few classrooms or your entire district.



MOST EXPERIENCED IN THE NATION

Our professional services team has successfully installed, calibrated and tested tens of thousands of ActivClassrooms... more than any other company in the U.S.A.

WHAT WE INSTALL

- **Turn-key ActivClassrooms**
- **Interactive Whiteboards**
- **Software and Accessories**
- **LCD and DLP Projectors**
- **Classroom Audio Systems**
- **TV's, Projector Screens and DVD-VCR's**

INSTALLING ACTIVCLASSROOMS IS NOT A JOB FOR AMATEURS.

The installation, calibration and testing process for integrated ActivClassroom systems is more complex than many schools may first realize. For best results, Promethean recommends that its customers engage Promethean-certified installers like the pros from Logical Choice Technologies. **As an additional incentive for using a certified installer, Promethean provides a FREE 2-year extension on the factory warranty** for its 300-Series and 300-Pro Series ActivBoards (including the boards in ActivBoard+2's)... upgrading the standard 3-year warranty to 5 years.

"I could not have been happier. The quality of your installations was truly 100% professional. NOT contracting with Logical Choice would've been one of the worst decisions we could have made."

- Curriculum Director,
NY School District

CUSTOMER FEEDBACK

WHAT YOUR SCHOOL COULD BE MISSING WITHOUT A LOGICAL CHOICE INSTALLATION. . .

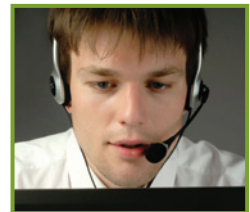
1 **FREE**  **EXTENDED FACTORY**
ACTIVBOARD WARRANTY

2 Pre-installation Site Checklist:
The key planning step to ensure each classroom is done right the first time.

3 Pre-installation Logistical Support:
Well-coordinated installation schedule and confirmation that all necessary products, parts and tools are onsite for installation.

4 Expert-quality Installation, Calibration, and Testing by America's foremost Promethean-certified install team.

5 Post-installation Customer Care:
Free help desk phone support for the life of any equipment we install.



1045 Progress Circle, Lawrenceville, GA 30043

(800) 730-5644

Rolling out a large number of ActivClassrooms?

Engage Logical Choice for Project Management Services

- To develop and oversee a comprehensive project plan.
- To manage installation workflow, logistics and staffing.

Logical Choice Technologies accomplished its first two large scale roll-outs of ActivClassrooms in 2005— both were *district-wide*. **Today, large implementations of 50 to thousands of 21st Century Classrooms have become a unique specialty at Logical Choice.** In 2009 alone, we managed and installed over 11,000 ActivClassrooms. The larger the project, the more important Logical Choice’s industry-leading experience, processes and extensive service resources become to the educators we serve.

We will work together with your district as a true partner... sharing common goals... dedicated to the achievement of a timely and successful ActivClassroom implementation. For more information, please call 800.730.5644.



Dedicated Project Manager

- Point person for school officials
- Helps define standard classroom specs
- Defines milestone objectives
- Builds a workable project plan
- Directs execution of project plan
- Reports progress vs. milestones

Area Service Manager

- Manages installation teams
- Coordinates loading of software
- Oversees quality control of work

Logistical Staff Support

- Installation scheduling
- Product logistics and staging

Strategic Team Support

- Bid Preparation (if any)

Post-installation Support

- Help Desk phone support
- Advanced technical training
- Assist firmware/software updates

PROJECT MANAGEMENT TEAM

SAMPLING BY STATE OF IMPLEMENTATIONS

(ActivClassrooms installed to date)

Sarasota County (FL)	3,300
Forsyth County (GA)	1,700
San Diego USD (CA)	700
Elmira City (NY)	510
Vestavia Hills (AL)	450
Hampton City (VA)	350
Marlboro (NJ)	275
Avon Lake (OH)	227
McKeesport Area SD (PA)	100

...and many, many more!

(References Available)